

FEATURES

- ▶ Easy Installation
strap-on hold down
- ▶ Small Package Size
narrow body case
- ▶ 2-Wire HookUp
Internal 7+ year battery
- ▶ 3-Wire Powered
3Vdc - 24Vdc ext. power
- ▶ Integral Conduit Port
1/2" Male Conduit
- ▶ Deep Penetrating
high strength magnet
- ▶ Long Term Reliability
epoxy sealed unit
- ▶ High Powered Switch
30 volts at 2 amperes
- ▶ Intrinsically Safe
CSA Class 1 Division 1

APPLICATIONS

- ▶ Plunger / Gas Lift
- ▶ Stroke Counter
- ▶ Proximity Sensing
- ▶ Automation Sensor
- ▶ Piston Timing
- ▶ Tank Level Control
- ▶ Plunger Arrival
- ▶ Magnetic Shut-Off

Magnetic induction switch penetrates through metal and non-metal materials to sense metal objects moving past the switch. Unique internal self-calibrating circuits automatically adjust sensitivity for optimum sensor performance to provide a minimum 1 second trigger pulse length. Rugged and durable, the TripMate™2012 magnetic shut-off switch is the perfect solution for industrial applications that require plunger arrival sensing, piston stroke counting or magnetic power switch control.

Simple installation saves time and money. The TripMate's narrow body package fits into those hard to get to places. A UV resistant rubber hold-down secures the TripMate to the well head pipe. An integral 1/2" male conduit port provides a simple interface for both rigid and flexible 1/2" conduit to meet even the most demanding electrical code requirements. The TripMate's screw cover protects connections to its removable 3-terminal screw block from both tampering and harsh environments.

Ideal switch configuration allows both high-side and low-side power switching for latching pneumatic valve and electrical relay control. Electrical isolation between internal sensing circuits and switch terminals provides ideal, low loss switch for low voltage, pull-down and pull-up control signal applications. A high current switch rating, low on resistance, and electrical isolation combine to provide an extremely versatile arrival switch, meeting a wide range of industrial control applications.



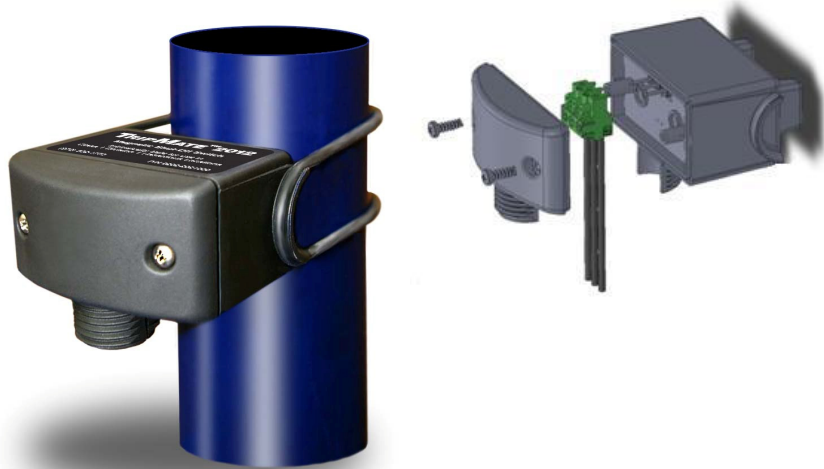
Multi-Connection Design

Long term, carefree operation
"The harder it works the longer it lasts"

Power Options include OKC Products, Inc. industry standard, internal lithium batteries for 7+ year 2-Wire applications or the option to use the legacy 3-Wire, external power hook-up to supplement battery power as needed for reliable, long term 24/7 operation in all weather extremes.

Carefree operation and long term reliability set the TripMate apart from other magnetic switches. Impermeable epoxy sealing and electrically isolated switch connections protect against harsh weather and lightning. Ultra low power electronics significantly reduce failure rates and provide intrinsically safe operation. Rugged packaging is made to last and give years of continuous performance in harsh weather conditions. The TripMate's chemical resistant, molded enclosure keeps the TripMate looking new even after years of oilfield service.

TRIP-MATE



P/N 9202-2021000

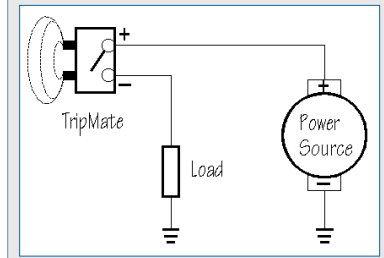
With its universal 2-wire / 3-wire hookup and integral 1/2" male conduit port, the TripMate is compatible with all electronic control systems, including PumpMate, Aero Mate and TimeMate.

TripMate™ 2012 Specifications

Manufactured under U.S. Patents 6,194,793 B1 and 6,462,507 B2

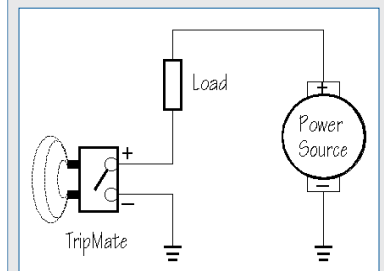
Enclosure		Electrical	
Weight	6 ounces (0.17 kg)	Output	Normally Open, Single Pole, Electrically Isolated Switch
Dimensions	2.6 W x 2.3 H x 1.6 D (inches) (6.6 cm x 5.8 cm x 4.0 cm)	Rating	30 Volts at 2 Amperes Less than 0.1 ohm On Resistance
Type	High Impact, Black Molded Thermoplastic	<hr/>	
Power		Operational	
Battery	Sealed 500mAh Lithium 7+ Years (estimated 100,000 hrs.)	Method	Utilizes Magnetic Induction to Sense Metal Object Moving Past Sensor Through Metal or Non-Metal Interfaces
Drain	5uA Average (30 uW)	Signal	Normally Open (NO) Switch. Minimum 1 second closure.
External	3Vdc - 24Vdc @ < 60uA	Mounting	Hold Down using Clamp, Cable Tie, or Rubber O-Ring Band.
Hook-up		Temperature	
Connections	3-Position Terminal Block 1. SIG (Signal) 2. COM (Common) 3. PWR (Ext. Power)	Operation	-40°F to 150°F (-40°C to 65°C)
Connector	#18 - 22 AWG wire Removable Screw Block 6 ft Black Molded Cable Provided with a White Signal (+) Wire Marker	<hr/>	
Conduit	Integral 1/2" Male Port (cable seal union available)	Certifications	CSA Intrinsic Safe for Use in Class 1, Division 1 and Class 1, Division 2, Group C and Group D Hazardous Locations

High-Side Power Switch



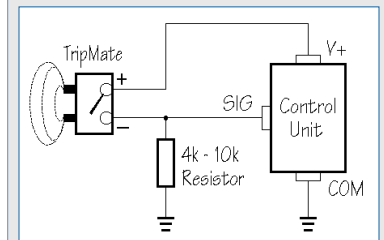
Maximum 30Vdc @ 2A

Low-Side Power Switch

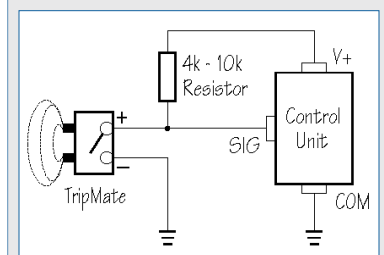


Maximum 30Vdc @ 2A

Normally Low Control



Normally High Control



Peterson Instruments

#123, 5655-10 street NE
Calgary, AB Canada T2E8W7
ph: 403-291-9169
1-800-667-7993
fax: 403-291-0960
email: sales@petersoninst.com
www.petersoninst.com