

Manifolds and hand isolation valves that finally bring a meeting point between extreme service and affordability.

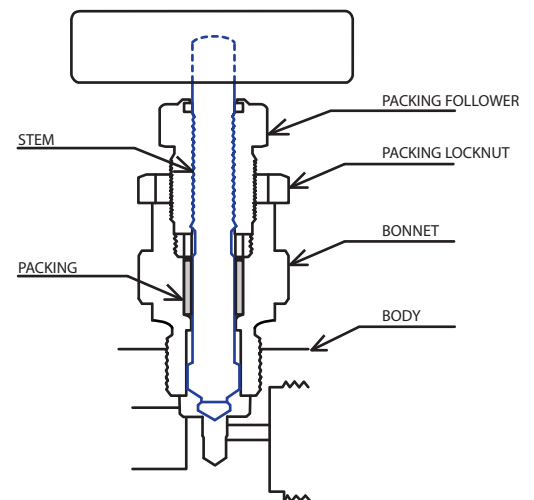
## *Instrument Manifolds and Hand Isolation Valves*



The five-valve natural gas manifolds offered by Peterson Instruments are designed for use with differential pressure and multivariable transmitters or recorders. Incorporated into the manifolds, two block valves provide instrument isolation and a single drain/vent valve allows for controlled venting, 100% capture of vented or drained process, and simplified in-process calibration capability. In addition, two equalize valves provide extra protection from leaking to ensure DP signal integrity.

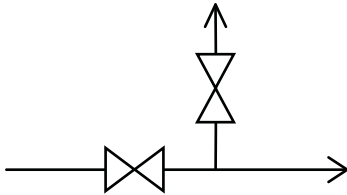
All hand valves and manifolds come equipped with integral seat, rotating valve stem tips, and 316SST body materials. Maintenance and repair is made economical and simple by using consistent bonnet assembly materials and sizes. One bonnet size is used for all valves including all five on the manifold. And with the integral seats, field personnel need not worry about carrying assorted varieties and sizes of parts.

Each valve and manifold is individually bagged, boxed and labelled with part number and heat number for easy inventory and quality control. CRNs are available on request.

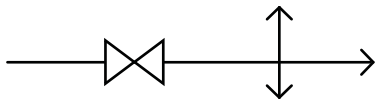




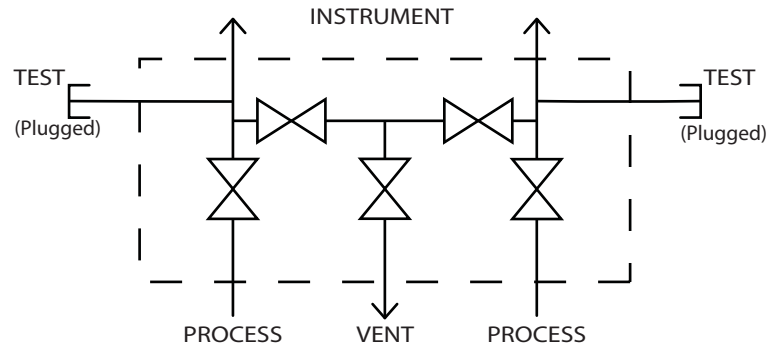
HAND VALVE available in M/M, M/F, F/F  
1/4" NPT and 1/2" NPT (1/2" M/F not pictured over)



GAUGE VALVE available in M/M, M/F  
1/2" NPT with 1/4" NPT vent or vent unthreaded



ROOT VALVE (not pictured over) available in M/M, M/F  
1/2" MNPT inlet with 3 instrument/vent connections 1/2"  
FNPT each and extended inlet length for  
temperature dissipation



5-VALVE MANIFOLD, PROCESS and INSTRUMENT  
ports are 1/2" female NPT. TEST and VENT ports are  
1/4" female NPT

NOTE: test/vent and process ports receive plastic caps and  
plugs for thread protection unless otherwise noted.

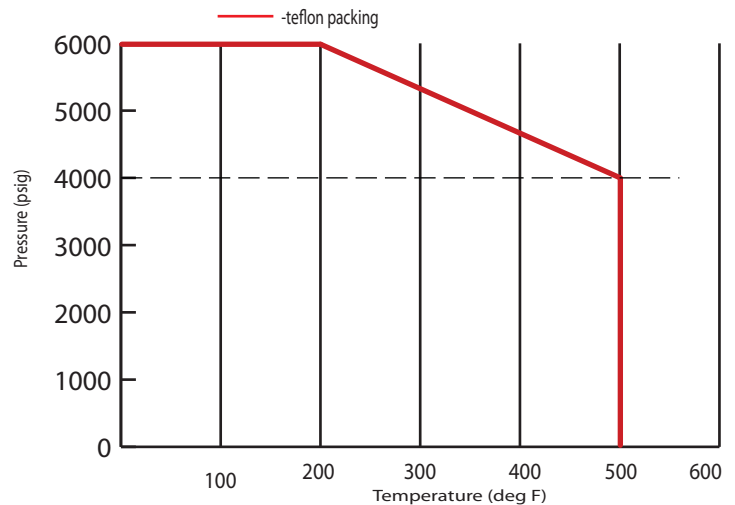
NOTE: Test ports receive 1/4" NPT plugs unless otherwise  
noted.

Process Wetted Materials	
Body	316 SST
Ball/Tip	316 SST*
Stem	316 SST*
Packing	TEFLON *
Bonnet	316 SST
Pipe Plug/Bleed screw	316 SST

\*enquire about other materials

DESCRIPTION	PART NUMBER	WEIGHT (net)
1/2" P/P MANIFOLD	MW-5VMANSST1/2NPT	2.5 Kg (5.5 lbs)
1/2" F/F	MW-F/FVALVESST1/2NPT	544g ( 1.2lbs)
1/2" F/M	MW-M/FVALVESST1/2NPT	567g (1.25 lbs)
1/4M/F	MW-M/FVALVESST1/4NPT	526g (1.16 lbs)
1/4" M/F (COMPACT BODY)	CALL	172g ( 0.38lbs)
Root / Gauge Valves	CALL	CALL

Temperature Safe Working Pressures\*



\* temperatures at valve bonnets not process

Allowable operating pressures are the same for  
all manifold and all hand valves, regardless of  
size.

Available in integral seat only.